



# The Rocket Messenger

November 2019

Ms. Keri Applebee, Principal  
Lincoln Northeast High School  
2635 N. 63rd Street  
Lincoln, NE 68507  
Phone: (402) 436-1303  
Fax: (402) 436-1345

## Message from the Principal:

Greetings Rockets,  
I wanted to take a moment and thank you all for a wonderful start to the school year! The time has gone quickly! As quarter 2 gets underway, please know that we will continue to work with students on our building wide R.I.S.E expectations of: Respect, Inclusive, Safe and Engaged. Our work and efforts with students fall under either *Effective Instruction* or *Culture for Learning*. At the base of all we do is the opportunity to build Community, Relationships and Collaborate with ALL Stakeholders through the Lens of Cultural Proficiency.

## Important Dates to mark on your Calendar:

November 6-----N-ACTS Meeting @ 5:30 pm  
November 6-----Musical "Les Misérables" @ 6:30 pm  
November 7-----Pre-ACT **10th Grade only** @ 8:00 - 12:00 pm  
November 7 -----State Volleyball @ LNE @ 12:00 pm  
November 8/9 -----Musical "Les Misérables" @ 7:00 pm  
November 10 -----Musical "Les Misérables" @ 3:00 pm  
November 11 -----Veterans' Day assembly @ 8:00 am  
November 11 -----NHS Volleybrawl @ 6:00 pm  
November 12 -----Jazzy Strings concert @ 7:00 pm  
November 13 -----ASVAB test @ 8:00 am  
November 14 -----Rocket Food Market @ 3:30 - 3:30 pm  
November 15 -----STUCO Blood Drive @ 9:00 am - 2:00 pm  
November 20 -----Parent/Teacher Conferences @ 4:00 - 7:00 pm  
November 26 -----Star Strutter Show @ 7:30 pm  
**November 27 - 29-Thanksgiving break - No School**  
December 18 - 20---Semester 1 Finals  
**December 23 - January 6--Winter Break - No School**

## For Quarter 2 our Foci will be as follows:

*Effective Instruction:* A strong continued focus on instruction and learning to provide students the best opportunities to earn credits in their semester 1 classes.

Please know that if your student would like additional academic support, Rocket House is open Monday - Thursday after school until 6:00 p.m. and on Friday until 5:00 p.m. Thank you to the amazing Rocket House staff who is there every day to support our students and their learning days. It's a wonderful opportunity for our students.

*Culture for Learning:* A focus for us will be decreasing hallway traffic and ensuring students are wearing their ID's. Along those lines, students who bring blankets to school with them will be asked to keep them in their lockers or backpacks, or office, during the school day, so as to not have them be a distraction to the learning environment. This also helps insure a safe school environment. Specifically, we will continue to work on on-time arrival to classes and appropriate language.

## Community Learning Center (CLC) Update:

Since CLC's are new to us this fall, the focus has been working to build the community learning center. The current Average Daily Attendance (ADA) is right at 90 students including both Rocket House and clubs. We now have 12 CLC clubs, 6 of which are brand new this semester! Our biggest club by far is Dungeons & Dragons, which currently has 44 students who alternate weeks. We also have some great ideas from students for new clubs next semester, including Sign Language, Anime, Video Production/Broadcasting, and more!

## District office news:

### Screen Time

Did you know? All screen time is not the same. There is a significant difference between "active" screen time (engaging in focused production of content) and "passive" screen time (consuming entertainment media). The American Academy Of Pediatrics (AAP) recommends families have thoughtful conversations around the purposes for using digital media and offers an online tool for calculating and creating a "personalized family media use plan." <https://lps.org/go/y8ov>

See the **LPS Parent Guide to Student Chromebook Use in LPS** for more helpful information and strategies to support your student's Chromebook use at home. <https://lps.org/go/o9bk>

Thank you for partnering with us!  
Go Rockets!  
Keri

LNE Mission Statement: Lincoln Northeast High School is dedicated to educating all students by emphasizing positive relationships, high academic expectations and respect for diversity.



@LNEHS



### Library News

Do you remember the print edition of the World Book Encyclopedia that you may have consulted when you were in school? Your student still has access to this resource today - just in a different online format. World Book Web is bigger and better than ever and has components that serve preschool through adults. Your child can access this from their LPS portal.

- World Book Advanced search which includes Today in History, Interactive Maps, World Newspapers and more
- World Book Timelines
- World Book Enciclopedia Estudiantil Hallazgos
- Banco de Contenidos aulaPlaneta
- L'Encyclopédie Découverte
- World Advanced for high school through adult learners

Have your student go to this database to see these resources and more!



### Digital Citizenship Tips

Would you like to have a conversation with your student about staying safe online? Here are some questions to get the conversation started:

- What information should we share with others online and what should we keep a secret?
- What websites should we use when we go online?
- How can you protect your digital reputation?



### TEAMMATES Mentors Needed

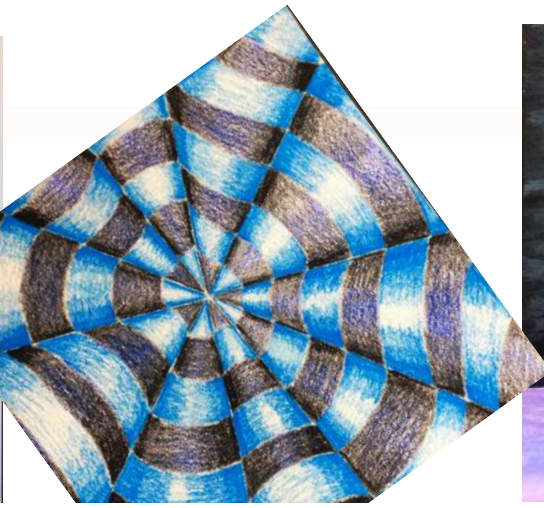
**Would you be willing to invest in one child's life? Become a mentor with the TEAMMATES Mentoring Program at Lincoln Northeast High School.** Meet with a student (grades 9-12) at school during school hours once a week for 30-60 minutes. Build a caring relationship while playing games and sharing interests. Focus on the student's strengths and foster their hopes and vision for their future.

Take the next step. All it takes is an application, which can be filled out online (say that you saw this in the LNE newsletter) at [lincolnteammates.org](http://lincolnteammates.org); a background check and a training session are required. For more information, contact Mrs. Kristin Skorupa at [kskorup@lps.org](mailto:kskorup@lps.org) or 436-1303, option 2.

### Thanksgiving Break

This year the district has given students and staff an extra-long weekend to enjoy the Thanksgiving holiday. School will be closed from Wednesday, November 27 - Friday, November 29; classes for middle school and high school students will resume on Monday, December 2.





The Lincoln Northeast Art Department would like to invite families and friends to our Fall Art Show in November. Students currently involved in art classes or part of our Art Club are encouraged to participate. Drawings, painting, digital photography, pottery and design work will be displayed. The event will be held on **Thursday, November 14<sup>th</sup> from 3:15-4:30** in the Media Center, refreshments will be served.

If you miss the opening reception, consider stopping by to view the art on display from 4-6:00 pm on November 20, during the first part of parent/teacher conferences.

**The Rocket Food Market is Open on Thursday, November 14!**

Northeast High School serves as an official distribution site for Northeast students and their families to pick up food items once a month during the school year. The Rocket Food Market will be open on Thursday, November 14 from 3:00 – 3:30 pm in the school cafeteria; enter through door 35. All students and their families are welcome to pick up *free* food. The Rocket Market will also be open on Thursday, December 12, the Thursday before finals' week.

**Northeast Community Learning Center (CLC)**

Want to stay informed about CLC activities and opportunities? Like us on Facebook (Northeast High School CLC) for updates on clubs, events, and photos of fun stuff happening after school!

**Current CLC Club Opportunities:**

Slam Poetry	French Club	Yoga Club	Art Club
Dungeons & Dragons	LNE Cares (Anti-bullying)	Gay Straight Alliance (GSA)	Psychology/Sociology Club
Latinos Unidos	Photo Club	Cooking Club	Card Masters

Have a great club idea that isn't in the list above? We are always accepting ideas for new clubs that you and your students would like to see offered here at Northeast! LNE Cares and Card Masters are two examples of new clubs that were started by students, for students. All you need is a great idea, a club sponsor, and a group of students willing to participate! Have your students bring their ideas to Erin and Spencer (your Civic Nebraska CLC representatives) during lunch or stop by Erin's office in the media center (133F) during the day or after school. We'd love to hear your suggestions!

Contact: Erin Voichoski - School Community Coordinator  
erin.voichoski@lps.org or 402.436.1340

# From the Counseling Center

## 9<sup>th</sup> Grade Classroom Presentations

Counselors met with 9<sup>th</sup> graders to share a presentation about progress to graduation. Students were given a research-based framework to help them understand if they are "on track," "off track," or on the "GO track" for graduation and beyond.

This research-based framework was communicated using a stoplight analogy. We wanted to clearly communicate that, just like at a traffic light, one is not permanently in one spot. A student can "switch" from one track to the next.

The "off-track" was matched with the red light. This indicates that based on current grades and attendance, the student would need to take summer school or make up courses to graduate with their class.

A Freshman is "Off Track" if:

- Student has an "F" in one or more core classes
- Student has 2 or more days of absences

The "on-track" was matched with a yellow light. This indicates that based on current grades and attendance, the student would graduate with their class. It allowed staff to communicate the idea of "slow down and look" to ensure you are doing what is needed to be successful.

A Freshman is "On Track" if:

- Student is Passing all classes
- Student has less than 2 days of absences
- Student's GPA is less than 2.75

The "GO-track" was matched with the green light. This indicates that based on current grades and attendance, one would graduate with their class and the school believes the student has performed a mastery of skill needed to be successful in college. We encourage our students to be seeking extra supports to ensure they are in a position to earn acceptance and financial support (scholarships, etc.) to have a well-rounded college application.

A Freshman is on the "Go Track" if:

- Student is Passing all classes
- Student's GPA is 2.75 or greater
- Student is passing English &/Or Math with a "B" or higher

Visit with your 9<sup>th</sup> grade student to see what their progress is and what TRACK he or she wants to be on!

## Campus Visits

Southeast Community College – November 21, 2019 for Seniors who are eligible for the "Learn To Dream" Scholarship. All seniors who qualify for free or reduced lunch are eligible for the Learn to Dream Scholarship. The scholarship will pay tuition and fees (60 credit hours) or about \$6,480.

## Diversity Symposiums

The University of Nebraska-Lincoln will be hosting several ***Diversity Symposiums*** for students in November. November 6 - Black Leadership Symposium for Seniors (registration deadline 10/29/19); November 12 - Native Leadership Symposium for grades 9-12 (registration deadline 11/5/19); and November 19 - Asian Leadership Symposium for grades 9-12 (registration deadline 11/11/19). Transportation will be provided. The fee is \$5 (fee waivers for students with financial need). [LINK](#)

## Scholarships

The **Susan Buffett Scholarship** opens November 1<sup>st</sup> with a February 1<sup>st</sup> (5 PM) deadline - [LINK](#)

The **Ken Jones Engineering Scholarship** for LNE Seniors - Due January 15<sup>th</sup>

\*\*Applications available in [ScholarshipQuest](#) or in the LNE Counseling Center.

**LPS Foundation Scholarships** will open December 2<sup>nd</sup> with a February 24<sup>th</sup> deadline.

**Lincoln Community Foundation Scholarships** will open December 15<sup>th</sup> with a March 15<sup>th</sup> deadline.

Use [ScholarshipQuest](#) to find other Nebraska-based scholarships.



## Senior To-Do List:

- **Complete the Free Application for Federal Student Aid (FAFSA )**

A College Planning Specialist from EducationQuest is available every THURSDAY at LNE to assist students and families with completing the FAFSA. Contact the LNE Counseling Center to make an appointment OR make an appointment on-line at [lne.lps.org](http://lne.lps.org), (Counseling, Financial Aid/Scholarships, Appointment to meet an EducationQuest rep at LNE). [LINK](#)

- **Apply to your top college choices**

Check the application deadlines at the colleges where you plan to apply.

- **Retake the ACT and/or SAT**

Colleges use your best scores for college admission and scholarships.

The registration deadline for the December 14<sup>th</sup> ACT Test is November 8<sup>th</sup>. This will be the last test seniors can take for many college admission and/or scholarship deadlines.

The registration deadline for the December 7<sup>th</sup> SAT is November 8<sup>th</sup>.

Fee waivers for both tests are available for students with financial need.

## Juniors...start researching colleges

If you narrow your college choices by the end of your junior year, your senior year will be less stressful. Here's how to get started:

- Review College Profiles at [EducationQuest.org](http://EducationQuest.org) for information about colleges in Nebraska and across the country.
- Meet with college representatives who visit your school and then visit the websites of the colleges that interest you to learn more about the schools.
- Once you've narrowed your choices, schedule campus visits and try to visit in the spring of your junior year while colleges are still in session.
- Check out LPS ACT Prep Classes at <http://wp.lps.org/testprep/>.

### Testing at LNE

**Pre-ACT:** 10<sup>th</sup> grade students will take the Pre-ACT on **November 7, 2019**. Testing begins at **8:00 am**. Students are asked to bring a photo ID (student ID), #2 pencil and a calculator. Please do NOT bring electronic devices (cell phone, ipod, smartwatch, etc). Food, drinks, and electronic devices are not allowed in the classroom.

**Only 10th grade students will report to school on this day**, they will be dismissed at 12:00 pm. The building will be closed for all afternoon and evening activities due to the State Volleyball tournament at Northeast. Building doors will be locked at 12:00 pm and the only entrance will be at the north end of the building to the north gym area, admission will be charged. Students, do not make plans to work with teachers on this day, they will be helping with testing and students will not be allowed in the building in the afternoon.

\*Questions: contact Angela Bates <[abates2@lps.org](mailto:abates2@lps.org)> in the main office.

### Parent/Teacher Conferences on Wednesday, November 20

The second night of parent/teacher conferences for first semester will take place on Wednesday, November 20 from 4:00 - 7:00 pm in the west gym. We hope you take this opportunity to visit with your student's teachers and help your child succeed at Northeast High School.



**Our next N-Acts meeting will be on Wednesday, November 6 at 5:30 pm.** This is a change from our usual Monday night meeting. I've invited Teri Effle to come talk to us about next steps with HOPE Squads and to help us brainstorm ideas for recruiting more parents to join us. Hope to see you then!

Keri Applebee



COLLECTIVE IMPACT LINCOLN

# YOUTH COMMUNITY BUILDER WORKSHOP

FREE | Sunday, Nov. 24 | The Bay, 2005 Y Street  
12 to 3 pm | Food & Childcare Provided

**LEARN MORE ABOUT: IDENTIFYING COMMUNITY  
ASSETS, ORGANIZING FOR CHANGE, BUILDING THE  
BRIDGE FROM DREAM TO REALITY**

Sign Up: <http://bit.ly/youthcbw>

Questions? Contact Nancy Petitto at 402.904.5191

Si tiene preguntas contacte a José Lemus al  
402.904.5191